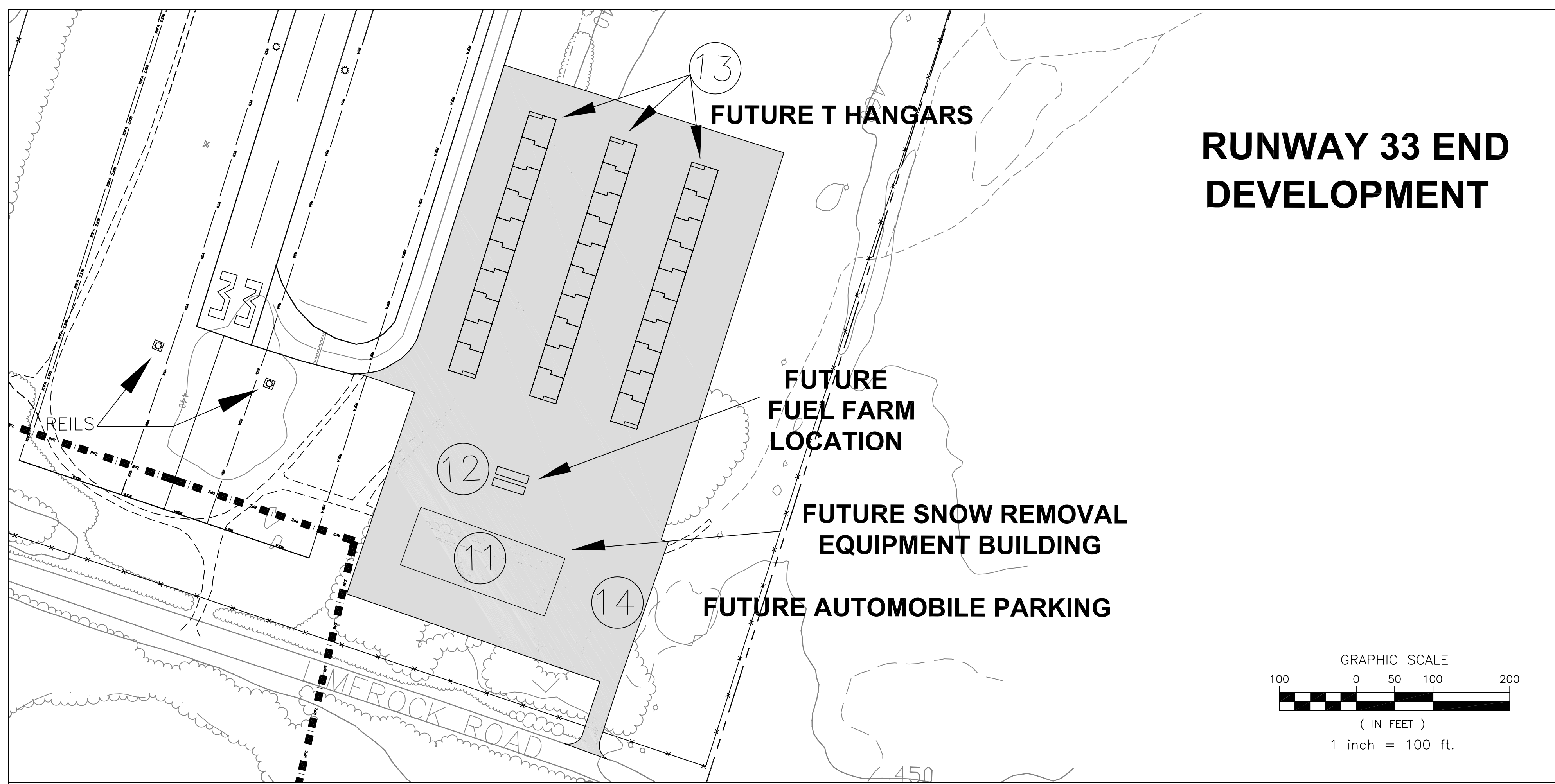
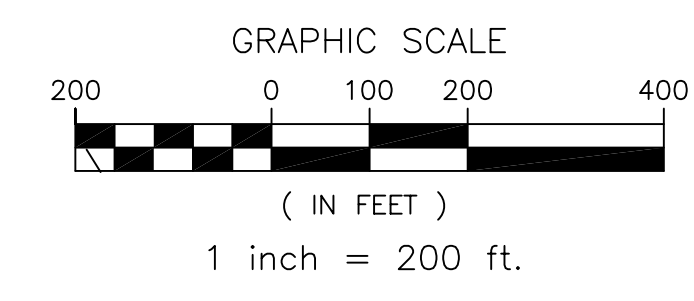
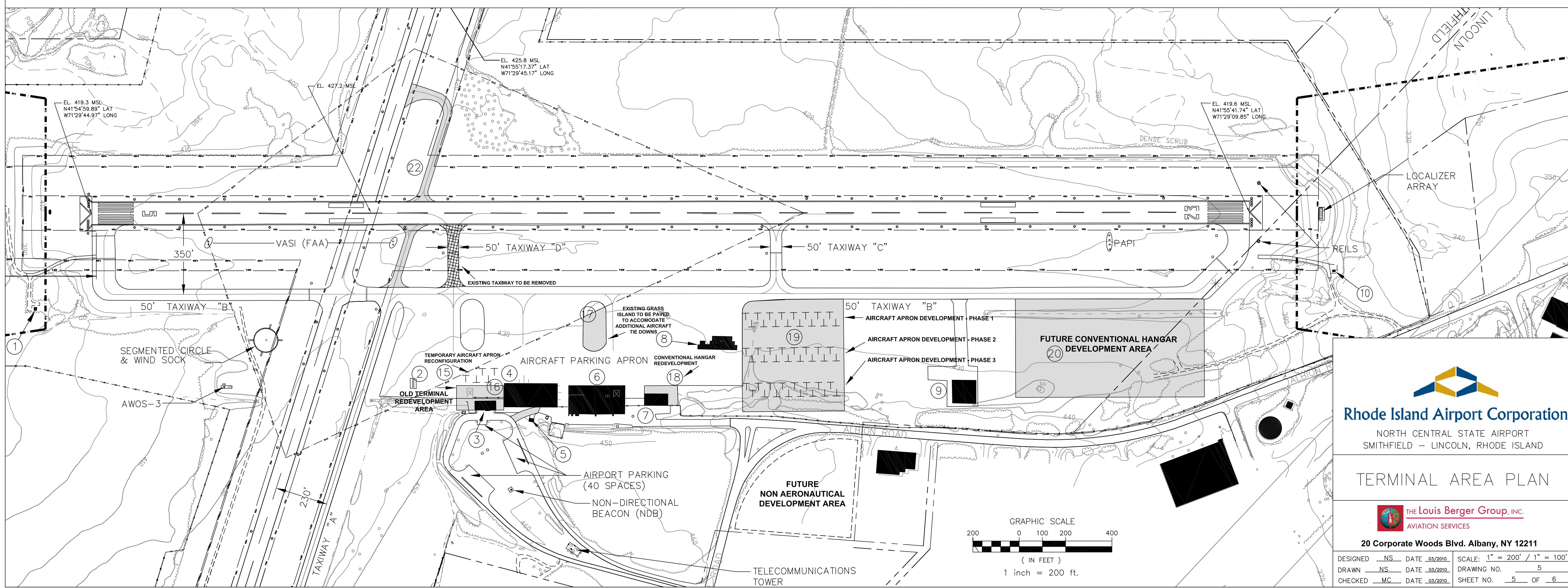
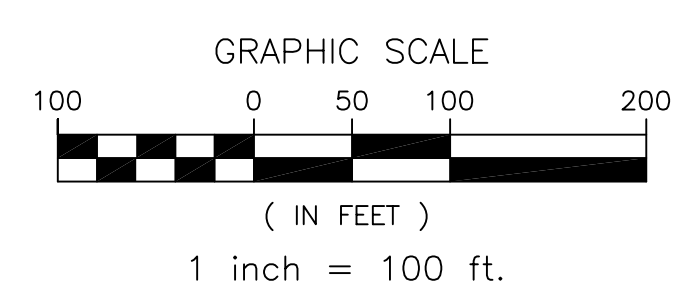
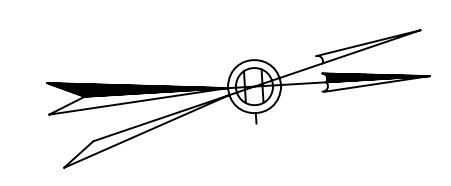


RUNWAY 33 END DEVELOPMENT



EXISTING AIRPORT FACILITIES	
NO.	ELEV. (MSL)
①	MALSR SUBSTATION 397'
②	FUEL FARM (TO BE RELOCATED) NA
③	OLD TERMINAL BUILDING 481'
④	MAINTENANCE HANGAR 458'
⑤	UTILITY BUILDING (TO BE REMOVED) 447'
⑥	TERMINAL BUILDING/AIRCRAFT STORAGE HANGAR 467'
⑦	MAINTENANCE HANGAR 457'
⑧	T-HANGARS (TO BE REMOVED) 442'
⑨	AIRCRAFT HANGAR NA
⑩	LOCALIZER SHELTER 371'
FUTURE AIRPORT DEVELOPMENT	
⑪	SNOW REMOVAL EQUIPMENT BUILDING NA
⑫	RELOCATED FUEL FARM NA
⑬	T HANGARS NA
⑭	AUTOMOBILE PARKING & ACCESS ROAD NA
⑮	TEMPORARY AIRCRAFT TIE DOWNS NA
⑯	OLD TERMINAL REDEVELOPMENT NA
⑰	AIRCRAFT APRON PAVEMENT CONSTRUCTION NA
⑱	CONVENTIONAL HANGAR REDEVELOPMENT NA
⑲	AIRCRAFT APRON DEVELOPMENT NA
⑳	CONVENTIONAL HANGAR DEVELOPMENT NA
㉑	MALSR APPROACH LIGHTING UPGRADE NA
㉒	TAXIWAY "B" EXTENSION NA

LEGEND		
FEATURE	EXISTING	FUTURE
AIRPORT PROPERTY LINE	---	SAME
RUNWAY VISIBILITY ZONE (RVZ)	---	SAME
RUNWAY PROTECTION ZONE (RPZ)	---	SAME
RUNWAY OBJECT FREE AREA (ROFA)	---	SAME
RUNWAY SAFETY AREA (RSA)	---	SAME
RUNWAY OBJECT FREE ZONE (ROFZ)	---	SAME
INNER APPROACH OBJECT FREE ZONE (IAOFZ)	---	SAME
PAVED ROADS, RUNWAYS, ETC.	---	SAME
UNPAVED ROADS	---	SAME
BUILDINGS	█	█
MEDIUM INTENSITY LIGHTS (MALSR)	⊞	UPGRADE TO MALSR
LOCALIZER	⊞	SAME
VASI (VISUAL AID)	□	SAME
FENCING	---	SAME
CONTOURS	---	SAME
TREE LINE (APPROXIMATE)	---	SAME





Rhode Island Airport Corporation
 NORTH CENTRAL STATE AIRPORT
 SMITHFIELD - LINCOLN, RHODE ISLAND

TERMINAL AREA PLAN

 **THE LOUIS BERGER GROUP, INC.**
 AVIATION SERVICES
 20 Corporate Woods Blvd. Albany, NY 12211

DESIGNED	NS	DATE	03/2010	SCALE:	1" = 200' / 1" = 100'
DRAWN	NS	DATE	03/2010	DRAWING NO.	5
CHECKED	MC	DATE	03/2010	SHEET NO.	5 OF 6