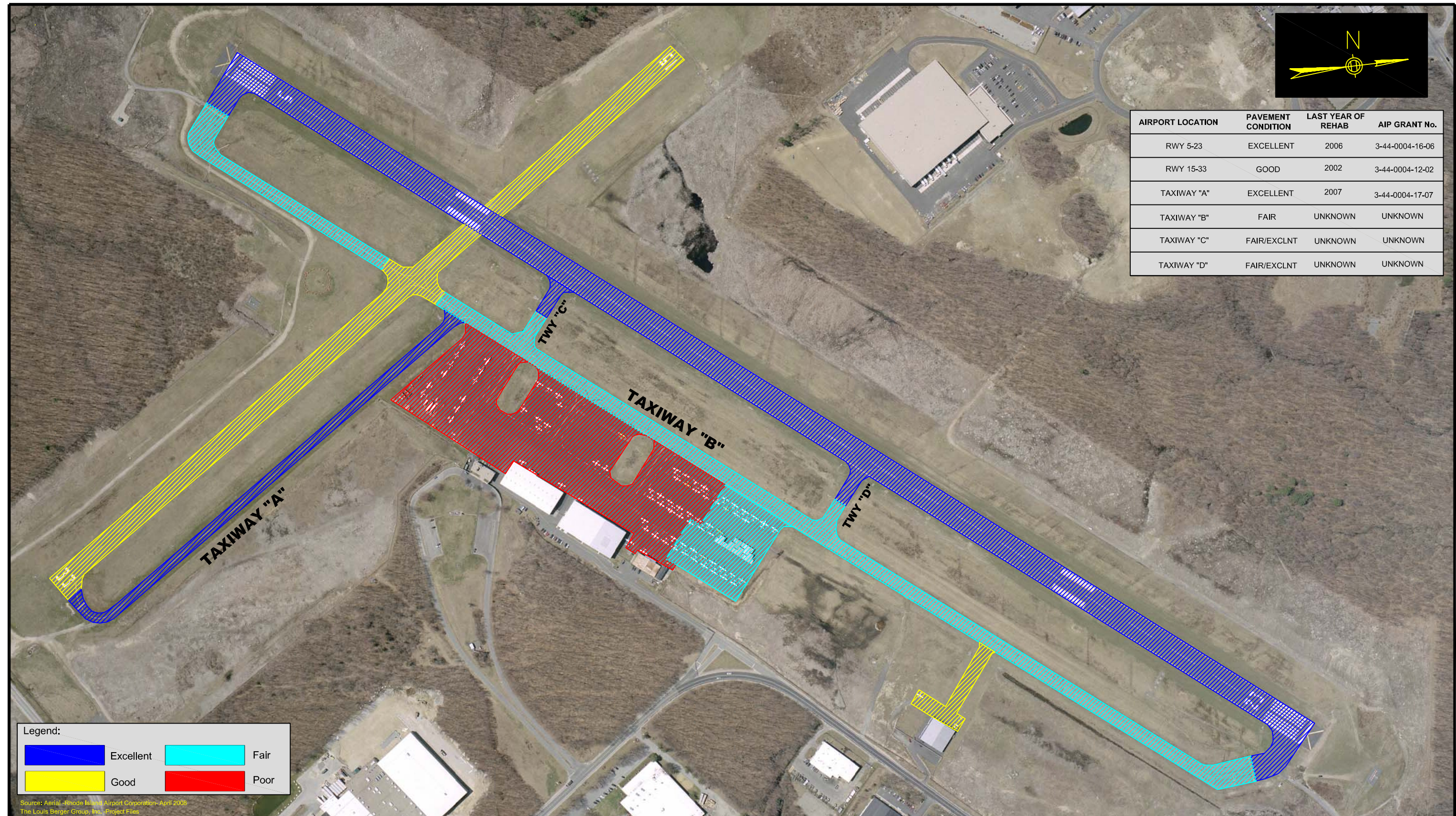



AIRPORT LOCATION	PAVEMENT CONDITION	LAST YEAR OF REHAB	AIP GRANT No.
RWY 5-23	EXCELLENT	2006	3-44-0004-16-06
RWY 15-33	GOOD	2002	3-44-0004-12-02
TAXIWAY "A"	EXCELLENT	2007	3-44-0004-17-07
TAXIWAY "B"	FAIR	UNKNOWN	UNKNOWN
TAXIWAY "C"	FAIR/EXCLNT	UNKNOWN	UNKNOWN
TAXIWAY "D"	FAIR/EXCLNT	UNKNOWN	UNKNOWN



Legend:

 Excellent	 Fair
 Good	 Poor

Source: Aerial - Rhode Island Airport Corporation - April 2008
The Louis Berger Group, Inc. - Project Files